



VISITES

- **Museu Arxiu Tomàs Balvey.** Cardedeu. Local itineraries in and around the district. Tel. 938 71 14 77.
- **Museu de la Noguera.** Balaguer. Guided tours round the town. Tel. 973 44 51 94
- **MACBA.** Barcelona. Guided tours to the temporary exhibitions.
- **Museu d'Arqueologia de Catalunya.** Empúries: *Roman visit.* Olèrdola: *Medieval visits.* Ullastret: *Iberian Sundays.* Tel. 934 24 65 77, and guided tours of the exhibitions.
- **Museu d'Història de la Ciutat.** Barcelona. Guided tours to Roman and Gothic Barcelona, to the ancient buildings of the city, Pedralbes monastery and the Casa Museu Verdaguer
- **Museu Nacional d'Art de Catalunya.** Barcelona. Guided tours of the collections of Romanesque and Gothic Art, the Cambó Collection and 19C and 20C Art.
- **Museu de la Música.** Barcelona. Guided tours for schoolchildren, self-guided visits and visits with sound support.
- **Thermalia. Museu de Caldes de Montbui.** Visits to historic Caldes and the hot spa water circuit.
- **Museu Molí Paperer de Capellades.** Guided tours: The craft paper-making process and the Romaní Shelter archaeological site.

CATALUNYA

International Museum Day

The 18 May was International Museum Day. The day was a great success this year with, in addition to the traditional Open Doors, the initiative of the programme *Discover a jewel in the museum*. Using the ICOM theme for this year, *Els museus: construint comunitats Museums: building communities*, a videoconference was held with the writer and journalist, Ignasi Riera, at the Museu Marítim de Barcelona, which was relayed by al-pi telecommunications to the Museu d'Art de Girona, the Institut d'Estudis Ilerdencs and the Museu Nacional Arqueològic de Tarragona. During the week, museums and local institutions offered lectures with speakers of recognised prestige in the cultural world.



Among the gifts received by the Museu del Montsià in recent months, two are very significant. The nature collections have received two gifts which comprise a total of nearly 5,000 items of fishes, corresponding to all the material from the daily displays throughout 1984 in three localities of the delta, the Canal Vell, the *Tancada* and the river Ebro, forming the most important ichthyological collection of the Ebro. The ethnological collection has received more than 90 objects from the workshop of J. Domènec, a traditional blacksmith in Amposta, such as tools and varied equipment, templates and drawings and other materials used for the design and production of tools for the cultivation of rice and other activities.

AMPOSTA

Donations to the collections of the Museu del Montsià

ARBÚCIES

Jornada: Sindicalisme i món rural a Catalunya. 1900-1975

Last April the Museu Etnogràfic del Montseny held a conference on *Sindicalisme i Món Rural a Catalunya*, in which specialists in this subject who dealt with the theme from several points of view. The presentation was a great success and enjoyed a large public attendance.



VISITES

• **Ecomuseu de les Valls d'Àneu.**

Visits to the Gassia house and by arrangement to the ridge of Alós, the Sant Pere del Burgal monastery, churches of Son, Santa Maria d'Àneu, Isil, Sorpe, Unarre and Jou.

• **Museu de l'Empordà.** Figueres.

Visit: *Know the collections*

• **Teatre Museu Dalí.** Figueres.

Guided tours to the rooms decorated by Salvador Dalí for Gala, at the Castell Gala Dalí House Museum at Púbol. Information:

• **Museu de Granollers.** Outings

to different points of Catalan geography.

• **Museu del Cinema.** Girona.

Guided tours on Saturdays and Sundays.

• **Museu d'Història de la Ciutat.**

Girona. Dramatised visits. July and August.

• **Museu de l'Hospitalet:** Urban

Routes. Guided tours to points of historic interest in the city, directed to schoolchildren and the public in general. Tel. 933 38 36 89

• **Museu Comarcal de l'Anoia.**)

Igualada: during the school year, guided tours and workshops concerned with leather and water. Dramatised visits to the ancient tannery Cal Granotes.

On 22 May last the Museu d'Història de Catalunya presented the *Quaderns del Museu d'Història de Catalunya*, with the objective of information and dissemination of the experiences and activities of the history museums of the world in a very special way, and *The Catalan History Museum Papers*, a joint initiative between L'Avenç and the Museu d'Història de Catalunya, with the object of a consideration of the content and conceptualisation of the various history museums in Catalonia.



Wednesday, 16 May saw the reopening of the permanent exhibition *Classification of the animal world*. This hall has been closed for a year while the building was being restored. During this time a number of improvements have been carried out in the room and the exhibition, which have substantially improved the fittings, and have restored original elements dating from the Universal Exhibition of 1888. The permanent exhibition has a new section which introduces the concept of the classification of living things, and more specifically of animals. The introductory cases show the branches or groups of the animal kingdom and explain the characteristics of 17 of them. Throughout the exhibition there is accurate and coherent graphic information. All the tickets are in Catalan and Spanish and some are in English.

FIGUERES

New educational service of visits to the Fundació Gala - Salvador Dalí

The Fundació Gala - Salvador Dalí has set up a new service of educational visits for boys and girls from 3 to 18 years. The content of these visits is arranged to suit the different educational levels through an imaginative, enjoyable, rigorous and coherent discourse, designed to stimulate the interest of the children and achieve the principal objective, that of teaching. Conceived and carried out by Educ'Art, under the direction of the Dalí Study Centre and the Diffusion Area, it takes place at the Teatre Museu Dalí in Figueres and at Gala Dalí Castle at Púbol.

BARCELONA

Regular publications by the Museu d'Història de Catalunya

Reopening of the permanent hall in the Museu de Zoologia



VISITES

- **Museu d'Art Jaume Morera.** Lleida. Visit the workshop: in the permanent exhibition of the Leandre Cristòfol Hall: *Introduction to the symbolic universe of work*. Children and primary education. All the year. Teaching modules: *The colours of pictures. Chromatic and pictorial aspects and Artistic diversity and the child as viewer*. Middle primary school year.
- **Museu Comarcal de Manresa.** Itineraries: *Medieval Manresa: city of craftsmen and churches*, *The splendour of the Baroque in Manresa*, and *The explosion of Modernism in Manresa*
- **Museu de Mataró.** Guided tours to the museum on Saturday afternoons, and to the Roman villa at Torre Llauder, for groups.
- **L'Enrajolada. Casa Museu santacana.** . Programme of guided tours to points of interest in the city and other museums. Tel. 937 75 07 95
- **Museu Comarcal de la Conca de Barberà.** Montblanc. Guided tours to all sections of the museum.
- **Museu d'Art de Sabadell:** the first Sunday of the month, a guided tour to the Casa Turull and the temporary exhibitions.

L'HOSPITALET DE LLOBREGAT

New permanent exhibition of the Museu d'Història de l'Hospitalet

The Museu d'Història de l'Hospitalet has opened a new permanent exhibition entitled *Hospitalet and its history* which explains the shift from an agricultural society to an industrial one, the demographic and urban growth and the historical, political, cultural and social facts that have been most significant in recent years. The town today and the



projects for the future are explained using texts, objects and documents, scenography, interactive apparatus and photographs.

The principal floor of the Casa Museu de Can Trincheria has recently been opened to the public for permanent display. This is a building from the 18C, although its current form is the product of various extensions and later renovations. The house, of great historical artistic value, illustrates the way of life of a wealthy family. One of the characteristic features of the house is the original decoration of the walls, preserved in several of the rooms, with important contributions such as that of Joan Carles Panyó (1755-1840), the first director of the Olot School of Drawing and a specialist in mural decoration. Among the furniture are an excellent Catalan walnut secretaire with boxwood marquetry, a pair of chests of drawers with remarkable animal paws as feet and, particularly, two bedrooms, the General's bedroom and the Bishop's bedroom, where there are two Olot-style beds, with polychromed and gilded ornamental work characteristic of the Olot workshops.

OLOT

Opening to the public of the Casa Museu de Can Trincheria

TERRASSA

Opening of the photovoltaic wall at the entrance to the Museu de la Ciència i de la Tècnica de Catalunya

On 23 May last in Terrassa the opening took place of the urban photovoltaic wall of colours, the largest in Europe. This symbolic construction for the museum and the city has



received support from the General Directorate XVII of the European Union, under the Thermie programme and from the Caixa de Terrassa. With this construction the museum unites the technological past with the sustainable future.





VISITES

- **Museu d'Història de Sabadell.**

Guided tours to points of interest of the city.

- **Museu Torre Balldovina.** Santa Coloma de Gramenet. Visits to the historic heritage of the city.

- **Museu Nacional Arqueològic de Tarragona.** Guided tours to the Roman villa of the Munts, and *Have a look at Tarraco*. Weekends, by arrangement. Tel. 977 25 15 15 .

- **Museu de Terrassa:** Guided tours to the sections of the museum: the Cartoixa de Vallparadis Castle, the Historic Buildings of the Churches of Sant Pere, the Casa Alegre in Sagrera and the Torre del Palau. Medieval, modernist and industrial itineraries and *A day in the life of a textile worker*. Guided tours in the district.

- **Museu de la Ciència i de la Tècnica de Catalunya.** Terrassa. Dramatised visit to the exhibition *It's all chemistry*. Every Sunday morning, until 29 July.

- **Biblioteca Museu Víctor Balaguer.** Vilanova i la Geltrú. Urban routes: *From Romanticism to Modernism* and the *Route of the "Americans"*. Times by agreement

The mayor of the town and the managing director of the Spanish Railways Foundation, have signed an agreement for the reconstruction of the roof of the bay where there is a spectacular bridge crane. The axis of the old workshop was a great central bay where the maintenance and repair of the engines was carried out. The first step towards the rehabilitation of this important industrial heritage was taken last year with the recuperation, as a new display area, of the Espai Segle XXI (21C Space). The Railway Museum has the purpose of extending the rehabilitated areas in order to offer visitors an imposing area showing the historic and industrial heritage of the town which will allow for better and more careful conservation, while at the same time communicating



of the role of the railways to contemporary society.

Within the context of the actions being carried out to complete and improve the general layout of the museum, the scenography of the Argentera Railway Tunnel has been installed at the entrance, with the corresponding information panels. In moving the locomotive Teresita and setting up the sectioned cabin of the Talgo III, the works of previous months were completed. To achieve a greater visual impact, the Museum has created an image on the front wall which gives the impression that the Talgo is really moving, and is actually coming out of a tunnel.0



VILANOVA I LA GELTRÚ

Agreement for the rehabilitation of the Museu del Ferrocarril with the Town Hall

Installation of a new scenography and information supports at the entrance to the Museu del Ferrocarril



AMPOSTA

MUSEU DEL MONTSIÀ

Gran Capità, 34
Tel. 977 70 29 54
info@museumontsia.org
http://www.museumontsia.org

20C ART IN THE DISTRICTS OF TARRAGONA

From 15 June to 26 August 2001

The purpose of this exhibition is to make known, from the perspective of a whole century, the most important artistic production of the Tarragona districts, taking into account the works, artists, schools, groups, museums, critics and promoters, and the more important cultural actions. The exhibition, which can be seen at the Museu d'Art Modern de Tarragona during the first months of the year, on this occasion pays particular attention to the development of artistic movements in the Lands of the Ebro, and includes the work of 30 outstanding artists from these districts in the last 100 years. The show is completed with explanatory panels which help the visitor to locate himself in time and in the different movements, and to see the works shown in the right context.

AND THEN FORM

From 4 to 30 September 2001

Presentation in the Museu del Montsià Museum of this exhibition mounted by the Museu de la Ciència of the Fundació "la Caixa", where, with the aid of more than 500 different pieces and various experiments, the visitor can discover the shapes most present in nature and our environment, on a scientific and aesthetic trip showing the evolution and triumph of some forms over others. Nature, with an extraordinary aspect of humility and efficiency, is both a source of pleasure for the recreation of the spirit and a free factory of patents; this is the theme of a proposal which moves between play and the bionic. The exhibition has teaching material for visiting schoolchildren.

BALAGUER

MUSEU DE LA NOGUERA

Pl. dels Comtes d'Urgell, 5
Tel. 973 44 51 94
museucn@tinet.fut.es
http://www.museucn.com

GRAFFITI... GRAFITIS...

From 7 to 30 September

This display submerges us in a passionate visual and conceptual voyage in the hand of a well-chosen and significant selection of marginal and spontaneous images from a thousand and one unknown places in Catalonia and Andorra. In this way the exhibition introduces us gradually to the great lines of motivation of the anonymous authors of millions of images, linked not only to their special and personal circumstances, but above all immersed in the great currents of political, social and economic change. There is a specially designed area to display the sets of graffiti from the Oroners castle at Camarasa, Noguera, one of the most important medieval groups conserved in Catalonia.

BARCELONA

FUNDACIÓ JOAN MIRÓ

Parc de Montjuïc
Tel. 933 29 19 08
fjmiro@bcn.fjmiro.es
http://www.bcn.fjmiro.es

**JOAN MIRÓ.
WOMAN, BIRD, STAR**

Until September 2001

On 18 June it will be 25 years since the inauguration of the Fundació Miró and the occasion will be marked with an exhibition designed to illustrate the complete development of Joan Miró's work, from his roots and his steps through different artistic stages until achieving his influence on the artistic creation of the 20th century. On this anniversary, a new display of works by Miró is presented, but now concentrating on the three elemental themes that coordinate his creation: woman, birds and stars.

FUNDACIÓ ANTONI TÀPIES

Aragó, 25
Tel. 934 87 03 15
museu@ftapiés.com

**INSIDE-OUT:
THE CAMBALACHE GARDEN
AN INTERVENTION BY FEDERICO
GUZMÁN**

Until 29 July 2001

This project creates an intermediate territory between public and private space, between interior and exterior, between the strictly artistic and the political-social. Federico Guzmán (Seville, 1964)



converts the terrace of the Foundation into a movable and itinerant garden, a market garden of food, medicinal and industrial plants, in a laboratory, in a kindergarten and in a meeting point. The products obtained from this garden are exchanged for objects, for the purpose of creating an accumulative and recyclable collection: a mutant collection which keeps up a continuous dialogue with objects, plants, drawings, visitors and photocopies. A conversation with the museum and the street, with the mind and the stomach. This project is linked to other towns with a series of site specific proposals by the same artist, currently in progress: Colombia (The Street Museum), at the Bogotá National University) and Seville (Matitas Divinas, at the Cartoixa).

**ARCHITECTURE
OF DISCOURSE**

From 18 September to 11 November 2001

The project questions the identity of discursive space through a group of works to be made by some international architects specifically for this occasion, with publications, the majority of the large collection of the Foundation library. The main theme revolves around the question: how can these reviews be experienced in terms of architecture? The architects take the specific parameters constituting the identity of each review and restructure them according to their own

criteria, translating them into an architectural proposal. This transformation of narrative space into architectural models allows a new consideration of how contemporary artistic practice and culture have no place in space, but only through the assemblies of discourses which, at the time, occupy and form the space. The project is developed around four areas of orientation: the library and periodicals (from October to Assemblage or Wired), architectural proposals (on trans-architecture, organic architecture, reflexive architecture, recycling architecture, nomadic architecture, etc.), a symposium (22-23 September 2000) and a publication.

**MUSEU D'ARQUEOLOGIA DE
CATALUNYA- BARCELONA**

Pg. de Santa Madrona, 39. Parc de Montjuïc
Tel. 934 23 21 49 / 934 23 56 01
barcelona@mac.es
http://www.mac.es

**SAINT MARTIN OF EM-
PURIES: AN ISLAND IN
TIME**

Until 31 October 2000

Sant Martí d'Empúries is an essential ingredient of the history of the ancient Graeco-Roman town Emporion-Emporiae. The archaeological works carried out according to the Plan for the interior restoration of Sant Martí d'Empúries (1994-96) have enabled a scientific demonstration that this locality was occupied as early as the late Bronze Age and that there was an indigenous population which maintained trading contacts with the eastern colonisers before the settlement that founded the Greek town of Emporion. The exhibition takes an historic journey from the scientific results of these excavations and is intended to give an understanding of the different human settlements that formed part of one of the most important historical towns of Catalonia.

DIALOGUES IN GLASS

Until 31 August 2000

A reflection over the close relationship between ancient glass and the new ideas in the field of contemporary glass, from the different manufacturing techniques.



MUSEU D'ART CONTEMPORANI DE BARCELONA (MACBA)

Pl. dels Àngels, 1
Tel. 934 12 08 10
macba@macba.es
http://www.macba.es

UNSUITABLE HOUSES. BARCELONA ART REPORT 2001, EXPERIENCES

From 1 June to 7 October 2001

"Cases Im-pròpies" is a thematic exhibition which presents the development of the concept of privacy in contemporary housing. While this is a production conceived by MOMA, for the presentation at MACBA the exhibition has been extended with projects by Spanish and French architects, in order to bring it closer to our own cultural ambit and include in it a more critical perspective. Starting from around thirty contemporary architectural projects, the exhibition reflects the changes experienced by private housing as a consequence of the social and cultural changes that have taken place in western society. The presentation of the purely archi-



tectural part is complemented by an exhibition of visual artistic ideas dealing with the concept of home from an ethic and social perspective.

THOMAS HIRSCHHORN. ARCHAEOLOGY OF ENGAGEMENT

Until 24 September 2001

This young artist is characterised by the utilisation of poor materials, such as plastic and cardboard, in elaborate "pseudo-architectural" constructions, full of irony about the universality of goods and consumption, which become a means of political observation. The "poor" exuberance and "anti-designed" character of these complex constructions question the standards of museum presentation,

dominated by a minimalist model, while introducing a dimension of the value of use in the work. This project prepared specially for MACBA, Archaeology of engagement, represents an archaeological site at a moment of the excavation process, where the visitors can see some elements which have already come to the surface and, as well, can perceive others still hidden beneath the soil. With this project, Hirschhorn is questioning both his own personal engagement and that of others: from the anarchists to Thomas More; from Marx to Georges Bataille; from the Palestine military camps to the United States marines; from Greenpeace to pressure groups against the death penalty.



ANTAGONISMS

From 27 July to 14 October 2001

PROJECT FOR THE THREE YEAR. BARCELONA ART REPORT 2001, EXPERIENCES

An exhibition for the analysis of the political aspects and activist nature of the artistic practices which have arisen from the second half of the 1950s up till now. The repertory of this display questions the aesthetic artefact in favour of the utilisation of art as a tool of social observation and practical criticism. The project will display works and documents with the intention of starting a debate on the street as a theatre for spontaneous activities, art as a service, fiction and



the construction of the historical memory, the postfunctional object, activism and work in collaboration, the questioning of the concept of authorship, alternative models of exhibition and the function of artistic practice in an ideological terrain. The ambit of *Antagonismes* goes much further than the visual arts and includes architecture, cinema, design, photography, performance, theatre, music, subcultures.

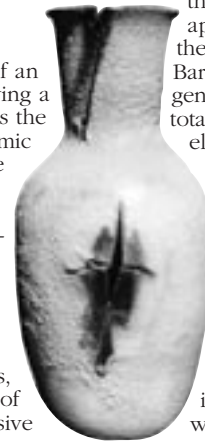
MUSEU DE CERÀMICA

Diagonal, 686
Tel. 932 80 16 21
museuceramica@mail.bcn.es

LLUÍS CASTALDO. ELEGY TO A RECEPTACLE

Until September 2001

Anthology of the work of an artist who, always following a classic line, displays to us the infinite subtleties of ceramic work. His receptacles are always paradigmatic; containers of classical appearance made to protect and define space, they are able to transmit the essential qualities of clay and form, in a personal production, where enamel, colour, thickness, texture and the gestures of incisions are also expressive elements.



MIES VAN DER ROHE. ARCHITECTURE AND DESIGN IN STUTTGART, BARCELONA, BRNO

Until 30 July 2001

Together with Le Corbusier, Frank Lloyd Wright and Walter Gropius, Ludwig Mies van der Rohe (1886-1969) is considered as one of the most important and influential twentieth century architects. He was outstanding not only in the field of architecture, but also did exemplary and long-lasting work in the field of furniture design. This exhibition brings together for the first time the architect's finest furniture designs, produced in the period between 1927 and 1931, related to the context of their creation:

the Weissenhof state apartments in Stuttgart, the German pavilion in Barcelona and the Tugendhat villa in Brno. A total of 30 objects, 6 models and various documentation allows us to understand both the manner of architectural conception and design by this master of modern architecture and the great influence that he has exercised on the processes of creation in the contemporary world.

THE JEWELLERY LABORATORY

Until 31 December 2001

The exhibition presents us with a different view of body ornament, from the 1940s until now. Contemporary Catalan jewellery challenges the social and aesthetic conventions and adopts the most heterodox materials in order to become a real medium of expression, sensitive to modernity. The show includes more than 120 jewels by more than 30 artists, forming this new museum collection.

MUSEU DE GEOLOGIA

Parc de la Ciutadella
Tel. 933 19 68 95
museugeologia@mail.bcn.es

THE SECRET COLOUR OF MINERALS

Until December 2001

When certain minerals are exposed to ultraviolet light they appear to our vision with unsuspected colouring. Some paintings, fabrics, toys and paper



made with fluorescent materials also show this singular characteristic.

**MICRO-ASSEMBLIES:
MINERALS IN MINIATURE**

Until December 2001

These micro-assemblies are minerals which have to be seen through a binocular lens, of a magnification generally between x10 and x60, so that one can see features invisible to the naked eye. This allows the study of a very broad range of spectrums for each deposit. The small dimensions of the micro-assemblies and the possibility of finding a large number of different species makes these types of minerals very attractive to collectors.

**MUSEU D'HISTÒRIA
DE CATALUNYA**

Pl. de Pau Vila, s/n
Tel. 932 25 47 00
kmhc@correu.gencat.es
<http://www.cultura.gencat.es/museum/mhc>

**THE CATALAN HISTORY
MUSEUMS**

From 2 July to 26 August 2001

The 20th General Assembly of ICOM will be held in Barcelona this year, and constitutes an opportunity to make known and project internationally the vitality of the world of museums in our country. With this objective, the Congress organisation team, with the support of numerous museums and Catalan public institutions, has programmed a series of acts, exhibitions and visits, which will be offered to those attending the Congress. The Museu d'Història de Catalunya (Catalan History Museum) wishes to take part in this initiative, organising and presenting a small temporary exhibition on the world of history museums in Catalonia. In a simple and attractive manner the MHC seeks to explain the important work that these museums are doing in preserving and disseminating the history and heritage of our country. Each of the museums selected will be represented in the display by a brief trilingual text (Catalan, Castilian, English), which will give information on the history, the objectives, the collections and the characteristics of the permanent exhibition, with one or more representative photographs. The display will also

include a map showing the location of all the selected museums and, as far as possible, a selection of pieces loaned by some of these museums, with the idea of showing the richness and diversity of their collections.

**CC.OO. TRADE UNION.
DEMOCRATIC MEMORIES.
SOLIDARITY PROJECT**

From 11 July to 26 August 2001

This is an itinerant exhibition commemorating the 25th anniversary of the founding of this association, at the clandestine meeting held in the church of Sant Medir de la Bordeta, on 11 July 1976. It is structured in three sections: Conquerors and conquered; times of resistance (1939-1951), A decade of articulation: times of pioneers (1951 - 1964) and The great transformation: the social and political movement to association (1964-1976).

**MUSEU D'HISTÒRIA DE LA
CIUTAT**

Historical buildings in the

Plaça del Rei

Pl. del Rei, s/n
Tel. 933 15 11 11
museuhistoria@mail.bcn.es

SACRED FOODS.

**BREAD, WINE AND OIL IN THE
ANCIENT MEDITERRANEAN**

Until October 2001

Bread, oil and wine - or the respective natural elements from which they come - wheat, olives and grapes - are three basic foods of the Mediterranean area which have been deeply integrated into the culture and religions. Through tools, receptacles and panels, the exhibition analyses these three symbolic foods which unite all the peoples of the Mediterranean, from their agricultural origins up to our own times. The exhibition delves into how these three foods have been the motor of change in the Mediterranean civilisations. There are pieces from 50 museums, many from Greece, but also from the Louvre, the British Museum, and several places in Israel. This is the second exhibition in the cycle "Mediterranean" (the first was "Goddesses").

**THE BUILDING OF GREATER
BARCELONA:**

THE OPENING OF THE VIA LAIETANA, 1908-1958

Until 31 October 2001

The opening up of Via Laietana, at the beginning of the 20th century, meant a great change in the shape of the city. A rapid route ran through the heart of the city, down to the sea. This exhibition by the Museu d'Història de la Ciutat reviews



the town planning development of the city from the opening of this new road up to the construction of the last great building in Via Laietana, in 1958.

**MUSEU D'HISTÒRIA DE LA
CIUTAT**

Pedralbes Monastery-Museum

Baixada del Monestir, 9
Tel. 932 03 92 82
monestirpedralbes@mail.bcn.es

PETRAS ALBAS.

**PEDRALBES MONASTERY AND
THE MONTCADA FAMILY (1326-
1673)**

Until 30 September 2001

The exhibition presents an outline of the history of the monastery founded by Queen Elisenda de Montcada, a convent, a royal foundation, which has remained closely linked with power since its beginnings. This display gives us an idea of the life of the nuns, their daily activities and interests.

MUSEU ETNOLÒGIC

Pg. de Santa Madrona, s/n
Tel. 934 24 68 07
metno@intercom.es

ITADAKIMASU.

**CULTURE AND GASTRONOMY
IN JAPAN**

Until December 2001

The objective of the exhibition is to show how an approach to the cooking of a country is a first step towards knowledge of its culture. Food is not only a biological necessity, but also a system of communication, shaping social differences, economic systems and also frontiers between countries. For the Japanese, eating is a form of self-confirmation as a member of a culture, the principles of which are implicit in the way in which the meals are traditionally prepared: perfection, work, asymmetry, beauty and naturalness. The display shows four essential elements of Japanese culture such as the seasonal changes, meals, the matsuri or festivities, and objects for the table.

EQUADOR:

A CHILD'S GLANCE

Fins al 30 de setembre de 2001

A show of pictures taken by Alfons García, a Catalan doctor working in Ecuador as member of a health project team, relating to three journeys through the 21 provinces, and setting out the whole problem of these Latin-American countries. Ethnographic materials serve to reinforce the message of the exhibition, which seeks to give a greater knowledge of the country and its people.

MUSEU FREDERIC MARÈS

Pl. de Sant Iu, 5
Tel. 933 10 58 00
museumares@mail.bcn.es
www.museumares.bcn.es

**AN ADMIRER SCULPTOR.
THE MARÈS EXHIBITION
IN MADRID IN 1926**

Until 30 March 2002

Frederic Marès's most creative stage, basically centred on sculpture, was in the time before the Franco regime. He had three large exhibitions, in 1925, 1926 and 1927, showing his own sculpture, in a style between noucentista and art deco. The 1926 exhibition was in Madrid, and the other two in Barcelona. "Un escultor admirat. L'exposició



Marès a Madrid l'any 1926" reconstructs this exhibition by the sculptor Frederic Marès in the Salones Nancy. That historic display was one of the few occasions on which a carefully selected group of his works was shown to the public.

MUSEU MARÍTIM DE BARCELONA

Av. de les Drassanes, s/n
Tel. 933 01 18 71/ 933 01 18 31
c.drassanes@diba.es
<http://www.diba.es-museus-maritim>

MUSEU DE MATARÓ. GUEST MUSEUM SERIES. INVITED PIECE

Until 10 July

Among the exhibitions in the series of Guest Museum. Invited piece all the maritime museums of the Maresme have been taking part. Now it is the turn of Mataró, which was the leading city of the maritime province, with a long sea-going tradition. The Mataró Museum will be showing its important collections of ship models, headed by the replica of the mythical Mataró coca, naval construction and also the latest acquisitions, especially the collection of ceramics.

THE LIGHTHOUSE CONSORTIUM

Del 10 de juliol fins al 10 d'octubre

In this tour of presentations by the different institutions forming The Sea of Museums we return to Barcelona for a show of the Consorci El Far. In this exhibition, we see the history, objectives and activities of this institution.

MANILA 1571 - 1898. THE WEST IN THE EAST

From 23 July to 30 September

This exhibition is the history of a journey in time and space. The transoceanic voyage goes from Seville to Manila, and takes us from West to East. At the beginning there is the entire infrastructure needed for the voyage (routes, the art of navigation in full evolution, the ships, etc.). In Manila we find another infrastructure to welcome the ships and their passengers (from the port infrastructure to defence and everything covering at least the basic necessities).

MUSEU NACIONAL D'ART DE CATALUNYA

Palau Nacional. Parc de Montjuïc
Tel. 936 22 03 60/ 22 03 76
mnac@correu.gencat.es
<http://www.gencat.es/mnac>

THE ROYAL MASK

Until 30 September 2001

La Màscara Reial, an album of a dozen prints with representations of mythological figures symbolising the virtues of the king, commemorates an historic event, the festival that the guild corporations and the principal Barcelona institutions held on the occasion of the proclamation of Charles III as king, and the entry of the new monarch, his queen and all the royal family to Barcelona, in October 1759. The engravings are based on the respective preparatory drawings designed by Francesc Tramulles (c.1717-1773), preserved in the Museu d'Història de la Ciutat de Barcelona, which also contributed to the design of the rest of the engravings by the Valencian Pasqual Pere Moles (1741-1797), creator of the ornamental letters of the explanations of the prints, as well as the titles and vignettes. The presence of artists from different places makes the *Màscara* a choral work, a very special display of incomparable formal beauty, through the sumptuousness, refinement and decorative elegance essential to the artistic language of the high rococo.

THE MODERNIST MEDAL

From July 2001 to July 2002



The object of this exhibition is to show how in the age of modernism there was a radical change in the art of making medals, with the full adoption of the medal as an object of art, that is to say, the recovery of the medal as a form for sculpture. The interaction of medal and sculpture is, then, one of the most important points of the exhibition theme. The medal, in the modernist era, for its own characteristics, became an important field for experimentation with artistic forms, resulting in examples of outstanding beauty. Catalonia, with its own well-defined lines of development, was a pioneer of this aspect in Spain, as in the rest of

the country these changes did not take place until some years later.

PAINTINGS FROM THE VENETIAN CINQUECENTO, FROM THE HERMITAGE MUSEUM IN ST. PETERSBURG

September to November 2001

The exhibition is organised jointly with the Bassano del Grapa Museum and will show fifty paintings from the so-called Golden Age of Venetian art, belonging to the Hermitage Museum. There are works by Giorgione, Titian, Palma Vecchio, Lorenzo Lotto, Marco Basaiti, Moretto da Brescia, Giovanni Battista Moroni, Lodovico Toeput "Il Pozzoserrato", Jacopo, Francesco and Leandro Bassano, Jacopo and Domenico Tintoretto, Paris Bordone, Bernardino Licinio and Paolo and Bonifazio Veronese. These are all works of the very first quality and at the highest level, some of them unfamiliar, most of which are being shown outside Russia for the first time. To this splendid group are added works by Titian, Jacopo Tintoretto and Jacopo Bassano belonging to MNAC.

MUSEU PICASSO

Montcada, 15-19
Tel. 933 19 63 10
museupicasso@mail.bcn.es
<http://tamu.edu/mocl/picasso/museum.html>

ALBERT GLEIZES

Until 5 August 2001

Albert Gleizes (Paris 1881-Avignon 1953) was a painter, illustrator and important cubist theorist. From 1900 he was tightly connected with the artistic life in Paris. After having painted with impressionist inspiration, he came very quickly to the cubist movement created by Pablo Picasso and Georges Braque in 1908. He was an important figure in the history of cubism. Gleizes's work is characterised by its intellectual fidelity to the principles of cubism, which he interprets in a very personal way. Like Delaunay, he took part in 1912 in the Cubism Art Exhibition of organised by the Galeries Dalmau, and in the same year he published, jointly with Metzinger, the book *Du cubisme*. Like Delaunay, Picabia and Laurencin, he was one of



the artists who, as a result of World War I, came to live in Barcelona between the spring and autumn of 1916. In Barcelona he had an individual exhibition at the Galeries Dalmau.

MUSEU DE ZOOLOGIA

Pg. de Picasso, s/n
Tel. 933 19 69 12
museuzoologia@mail.bcn.es

FORGOTTEN BY NOAH

Until 30 September 2001

For a long time it was believed that the finding of buried bones confirmed the theory that they were produced by a universal deluge. This exhibition shows, through the reproduction of landscapes, extinct mammals and fossils, what the mammal population was like in the Neogene period (between 25 and 1,8 million years ago). The connecting line is formed by the important deposits in the Iberian Peninsula. The exhibition is completed with specimens from today, related with the extinct species.

MUSEU DEL FUTBOL CLUB BARCELONA

Av. Aristides Maillol, 9
Tel. 933 96 36 08
feedback@fcbarcelona.com
<http://www.fcbarcelona.es>

POSTERS FROM THE HISTORY OF BARCELONA FOOTBALL CLUB

To celebrate the 15th anniversary of the founding of the museum, a display has been arranged of 300 of the posters preserved in the museum itself. These works were used as a visual attraction to draw the pub-



lic to the stadiums of all the sports sections of the entity.

CARDEDEU

MUSEU ARXIU TOMÀS BALVEY

Daurella, 1
Tel. 93 844 40 04
mcardedeu@diba.es

CARDEDEU 1901. THE START OF A CENTURY

Fins a l'agost de 2001

The display, which inaugurates the temporary exhibition room of the recently renovated museum, explains the life of the municipality a hundred years ago, through the eyes of Tomàs Balvey, pharmacist and local historian, who tells the story of the people over ten years, day by day, in his diaries. In the diary for 1901 he explains the demography and town structure, local and district politics, the agricultural and industrial economy and the daily life, and mentions especially how the townsfolk spend the summer. Each of the themes is illustrated with photographs and objects from the period, from the museum collections.

CERVERA

MUSEU DE CERVERA CASA MUSEU DURAN I SANPERE

Major, 115
Tel. 973 53 39 17 / 973 53 04 88
duransanpere@teleline.es

CERVERA. SECRET TREASURE. THE FORMATION OF A MUSEUM

From 29 April 2001

This display opens the new Temporary Exhibition Hall of the future Cervera District Museum, offering a continuous service of open doors and new projects, which will help to disseminate the rich heritage stored within it. The present exhibition

is founded on a double theme: on the one hand it seeks to impart knowledge of the most important works belonging to the Museum collections and, on the other, goes deeply into the history of its own origins and formation. Thus, starting with an exception guiding figure, Agustí Duran i Sanpere, founder and true soul of the Museum, we are led to discover the "treasures" which are stored there: from a selection from the archaeological collections to sculptures by Jordi de Déu and the Master of Cervera, paintings on panel by the Master Girard, collections of ceramics and tiles from the 16C and 17C, and collections coming from the University.

EMPÚRIES (L'ESCALA)

MUSEU D'ARQUEOLOGIA DE CATALUNYA- EMPÚRIES

Del Museu, s/n
Tel. 972 77 02 08
empuries@mac.es
www.mac.es

JOSEP PUIG I CADAFALCH, EMPÚRIES AND L'ESCALA

Until September 2001

Exhibition integrated into the events of the Puig i Cadafalch year, reflecting the relationship that this architect had with Empúries and the village of l'Escala as a promoter of the first archaeological excavations in Empúries.

FIGUERES

MUSEU DE L'EMPORDÀ

Rambla, 2
Tel. 972 50 23 05
fimusemp@ddgi.es

AUGUST PUIG. ANTHOLOGY

From 22 June to 2 September 2001

Exhibition in tribute to the painter and engraver August Puig i Bosch (Barcelona 1929 - Girona 1999), considered as one of the key artists in post-war painting. Initially influenced by fauvism, Picasso's cubism and the world of Kandinski, Klee and Miró, August Puig was one of the leaders of informalist abstraction in Catalonia. His informalism, obtained by a technique of oil with water and through his own artistic language, formed a painting style in which magic and abstraction cohabit with reality and fiction. The exhibition, organised by the Department of Culture of the Generalitat of Catalonia and now on show at the Museu de l'Empordà - it was first shown at the Centre d'Art Santa Mònica (Santa Monica Art Centre) last year - wishes to pay tribute to the artist who from the 1970s lived and worked in the Empordà. In parallel with the exhibition there is a series of activities, such as lectures, concerts and the publication of a catalogue.



TRANSART 3

From 7 September to 14 October 2001

Third holding of our biannual TRANSART show, organised by the Museu de l'Empordà i l'Ajuntament de Girona (Girona City Hall), with the intention of stimulating and disseminating the contemporary artistic creation of the Girona and Empordà districts. On this new occasion they open

once again the exhibition area of the Mercè Cultural Centre, the Saint Nicholas chapel and the Municipal Exhibition Halls of the city of Girona, and the temporary rooms of the Museu de l'Empordà in Figueres, to house, following the structure of the initial project, the new proposals in words and images of various carefully selected writers and artists. A catalogue of the exhibition has been published.

TEATRE MUSEU DALÍ

Pl. Gala-Salvador Dalí, 5
Tel. 972 67 75 00/ 972 67 75 09
t-mgrups@dali-estate.org
http://www.salvador-dali.org

Gala Dalí Castle Museum House, Púbol

pbgrups@dali-estate.org

FROM THE WORLD OF REPRESENTATION OF SALVADOR DALÍ

Until October 2001

A new exhibition of photographs from the Centre d'Estudis Dalinians — Fundació Gala - Salvador Dalí (Dalí Study Centre - Gala-Salvador Dalí Foundation), which shows us the various degrees of relationship that Salvador Dalí had with leading figures in the world of show business. There are good wishes from friends who gave Dalí the opportunity of designing decor and costumes for the cinema and theatre, others which enabled him to construct a new episode in his biography, and yet others which simply formed part of his project of constructing an image of himself.

GAVÀ

MUSEU MUNICIPAL DE GAVÀ

Dolors Clua, 13-14
Tel. 936 38 25 70
museu.gava@bcn.servicom.es
http://atica.es/museu-gava/activit.htm

EVERYTHING THAT SPEAKS TO ME. PAINTINGS BY M. MAR SANT

Until 29 July 2001

M. Mar Sant was born in Viladecans and for some years has been living in Gavà. She was trained in different schools and with different techniques and for some years combined her creative activity with teaching. A



painter and illustrator, since 1988 she has taken part in numerous individual and joint exhibitions in Catalonia and in Europe. She has also won several prizes and recognition in Catalonia and Italy, and has taken part in solidarity campaigns.

BESTIARY OF FIRE

From 29 June to 29 July

The bestiary, with or without fire, has always been present in our country as a part of festivals and religious or secular celebrations. Men, women, children and old people, are all attracted by the fabulous beasts and above all by those that fulfil the rituals of smoke and fire, descendants of the legendary dragons and demons. The exhibition is a collection of photographs, taking us on a short tour around the present-day world of our fiery beasts, through the eye of the reporter who has dared to come close to them and who teaches us about them with their many names, shapes, sizes, in their living context, surrounded by their bearers, in repose or in action, and creates an aesthetic which is always spectacular, disturbing and suggestive.

GIRONA

MUSEU D'ART

Pujada de la Catedral, 12
Tel. 972 20 38 34
museuart@ddgi.es

JOSEP ALBERTÍ

From 8 August to 9 December

Retrospective exhibition which starts from works by this artist donated to the town of Sant Feliu de Guíxols and kept in the History Museum of the town of Sant Feliu de Guíxols.

LANDSCAPE NOTEBOOK CYCLE

From 29 May to 1 July 2001

Cycle of exhibitions which have as a common denominator the theme of landscape, but dealt from the viewpoint of contemporary artists who use not only painting, but also other means of expression such as installations, videos and photographs, with Josep Uclés and Benet Rosell.

MUSEU DEL CINEMA. COL·LECCIÓ TOMÀS MALLOL

Sèquia, 1
Tel. 972 41 27 77
museu-cinema@ajgirona.org

PANDORA - AVA GARDNER

Until 11 September 2001

On the 50th anniversary of the filming of Pandora and the flying Dutchman at Tossa de Mar and Girona, the Museu del Cinema is organising this graphic show as a tribute and memory of this cinematographic adventure and the impact of the presence of the first figures of the American star system, with James Mason and Ava Gardner, in the context of the (from then on very well-known) Costa Brava and the city of Girona in the 1950s. The display shows photographs of the filming and the stay of the famous stars in our regions and graphic and audio-visual evidence recording the opinions of those who lived through this filming.



MUSEU D'HISTÒRIA DE LA CIUTAT

De la força, 27
Tel. 972 22 22 29
pfreixas@ajgirona.org

MADE IN GIRONA. INDUSTRIALISATION IN THE 19C

From 27 June to 9 September

This exhibition is intended to display the significance of production in the city of Girona, both with regard to technological, scientific and/or historic improvements, and with regard to the projection of the city itself to the exterior, through the export

of its products. Girona as a productive city and a service city. The city takes part in the industrialisation of the 19C due to the abundance of water, used from medieval times to provide energy, the railway network and the population concentration in the city, which made Girona into the capital of the province. In spite of the industrial recession at the beginning of the 20C, from the second third of the century the city experienced a general growth in industrial production and progressive specialisation of the productive sectors. We are shown the uniqueness and specific nature of these products and the story of their production, putting into relief their importance on the supra-local scale and for the economic development of the city.

GRANOLLERS

MUSEU DE GRANOLLERS

Anselm Clavé, 24
Tel. 938 70 65 08
museu@ajuntament.granollers.org
http://www.museugranollers.org

GRAPHICS.

AMADOR GARRELL

Fins al 8 de juliol de 2001

An activity in the Spring Designs 2001 programme. The contribution of Amador Garrell (1916-2000) to graphic design within the panorama of Catalonia is important, a reference which recalls the presence of a certain time, more than three decades, from the 1940s to the 1970s and, at the same time, the timelessness of modernity.

MEDITERRÀNIA.

LAND AND LANDSCAPE

From 28 August 2001 to 4 November 2001

"Mediterrània: Territori i Paisatge" is an exhibition of aerial and satellite photographs, taken from different ambits and from both a scientific technical and a plastic viewpoint, displaying the Mediterranean landscape and the interrelationship between mankind and the land.

L'HOSPITALET DE LLOBREGAT

MUSEU D'HISTÒRIA DE L'HOSPITALET

C. de Joan Pallarès. Casa Espanya
Tel. 933 38 13 96
m.hospitalet@diba.es

THE SAINT ROC ALTARPIECE IN HOSPITALET

Until 31 December 2001

On the occasion of the restoration of the assembly of 16C religious panels which make up the Saint Roc altarpiece, there are also exhibited architectural remains of the ancient church which held them, as well as de-



tails of artistic and iconographic interest.

IGUALADA

MUSEU DE LA PELL D'IGUALADA I COMARCAL DE L'ANOIA

C. de Joan Mercader, s/n
Tel. 938 04 67 52
m.igualada@diba.es
http://www.aj.igualada.net

IGUALADA FROM THE AIR. PHOTOGRAPHS BY JOSEP MAS

From 5 to 22 July 2001

A set of photographs of the town taken from a balloon, showing Igualada from a differ-





ent angle, and exposing the town planning aspects, with the squares, streets, buildings, corners, details and unimaginable perspectives, but also a way of coming close to it, discovering the more personal aspects, such as home, school, the work place, with the overall intention of encouraging knowledge of the city.

SCULPTURE COLLECTIONS OF THE MUSEUM: 19C AND 20C

From 22 August to 16 September 2001

Display of a first selection of the best works from the sculpture collection of the Museum, the start of regular showings of these works kept in store, which are not normally on show to the public.

THE LABORS GROUPS OF ARTISTS AND CRAFTS

From 20 September to 7 October 2001

Display of work done by students of the Anna Labors workshop in Igualada, using various techniques, such as patchwork, cross-stitch, tapestry stitch, ribbon embroidery, etc., with applications in household linens.

LLEIDA

MUSEU D'ART JAUME MORERA

C. de Cavallers, 15. Edifici El Roser
Tel. 973 27 36 65
mmorera@paeria.es
<http://www.paeria.es/morera>

BEFORE AND AFTER GOYA. IBERCAJA COLLECTION. SPANISH AND EUROPEAN PAINTING FROM THE 18TH AND 19TH CENTURIES.

From 6 to 30 September 2001

This is a remarkable exhibition (it is the first time that the majority of these works have been on show) made up of an important display of the artistic heritage of Ibercaja, which - on the occasion of its 125th anniversary - will be putting on show the best pieces from its collection, from the age of Goya up to Spanish painting of the end of the century, passing through the neo-classicism of Eugenio Lucas and some regional schools among late costume paintings, naturalism and modernism.



THE COLL DRAWINGS

From 3 to 19 July 2001

The exhibition, produced by the Caixa de Manresa Foundation, is a tribute to Josep Coll, one of the most outstanding draughtsmen of the TBO. This is not, however, a nostalgic tribute. In view of the importance of reviewing in depth the artistic and cultural creation of the 20th century, giving a proper value to artistic statements still not fully considered today, we wish to offer the Museum's public the possibility of coming closer to the work of Josep Coll, a mason and sketcher of anecdotes. In this way also we open the exhibition programme of the Museum with a creative support, the comic, of long tradition in Lleida.

MUSEU DE LLEIDA. DIOCESÀ I COMARCAL

Església de Sant Martí
Tel. 973 27 32 30

PROOEMIUM.

A DISPLAY FROM THE ART COLLECTIONS OF THE LLEIDA DIOCESAN MUSEUM

Long term exhibition

This exhibition, with the name of "Prooemium", that is to say, prelude, presents an important part of the valuable collections of the Museu Diocesà de Lleida, its history and the philosophy which must govern the future Museu de Lleida. Diocesà i Comarcal. Other important works, such as the chess set from Àger, the altarpieces from Corbins and Albatàrec, sculptures in stone from the Magdalena and alabaster apostles and corbels, are carefully arranged for display in the Church of Saint Martin, which has been restored and reconditioned for the purpose, until the works of the new museum are finished.

STONE SKIN

From June to October 2001

The collection of Romanesque corbels and capitals, most of which belong to the so-called Lleida school, articulates the narrative thread of this exhibition. The visitor can enjoy an unusual



tour, where the stone has become a ductile material for the composition of a harmonious symphony of symbols and decorative richness in a micro-universe of Romanesque sculpture.

MANRESA

MUSEU COMARCAL DE MANRESA

Via de Sant Ignasi, 40
Tel. 938 74 11 55
m.manresa@diba.es
<http://www.minorisa.es/manresa/museum.htm>

ART COLLECTION OF THE MANRESA ARTISTIC CIRCLE

From 8 June to 8 July 2001

This artistic entity, active from the beginning of the 1930s, has accumulated a collection of paintings mostly by painters from Bages, but with some also from other places, the result of a relationship with the Circle or its members. The Artistic Circle is moving to new premises and during the interim, jointly with the Museu Comarcal de Manresa is organising this exhibition with a selection of 30 works from among the more than 100 in its collection.

150 YEARS OF RAILWAY IN CATALONIA

From 23 August to 21 October 2001

Exhibition produced by the Museu de Mataró with the cooperation of the Àrea de Cultura de la Diputacion de Barcelona and the Comission de Museus

Locals (Culture Area of the Provincial Council of Barcelona and the Local Museums Committee). With an attractive graphic and scenographic presentation, the exhibition display ranges from the first railway line to be built on the Iberian Peninsula, (Barcelona - Mataró, 1848) to the development of this communication network for people and trade. At Manresa the exhibition is supplemented by a cycle of lectures organised by the Centre d'Estudis del Bages (Bages Study Centre) on the world of the railways and communication routes to Central Catalonia.

YOUNG REPUBLICAN PEOPLE

From 18 May to 2 September 2001

This exhibition on the Republic, its men, its task of government and its cultural actions at Manresa, is being extended in the Multipurpose Hall of the Museum, on the ground floor of the Sant Ignasi building. One will have, therefore, the opportunity of reviewing what has already seen or visiting it again in this new setting, close to the cloister of the Museum.

PHOTOS OF MANRESA

From 6 to 15 July 2001

The Museu Comarcal de Manresa, with the collaboration of the Arxiu Històric Comarcal del Bages (Bages Historical Archive) has produced this exhibition, which can be seen in the Sant Domènec Exhibition Hall. This exhibition will present more than 50 photographs taken by Ignasi Rubinat, in panoramic format in black and white, which as well as their aesthetic content have added interest in showing city areas with the passing of the years and in different seasons.



MATARÓ

MUSEU DE MATARÓ

El Carreró, 17-19
Tel. 937 58 24 01
museum@ajmataro.es
<http://www.infomataro.net>

**SUBIRACHS.
IDEA, MATERIAL, FORM**

From 29 June to 11 September 2001

The Patronat Municipal de Cultura de Mataró (Mataró Municipal Cultural Patron) has organised an exhibition to illustrate the artistic career of Subirachs. Located in two areas of the city, the Museum rooms and those of Can Palauet, the display will assemble a total of 63 sculptures, 32 drawings and various engravings and lithographs. Following a chronological line, the main objective of the exhibition, under the title "Idea, Matèria, Forma", is to reflect what Subirachs considers is the essence of the creative process.

THE HUMAN PRIMATE

From 21 September to 4 November 2001

The Human Primate. Origins and Evolution of Our Species is a travelling exhibition which displays the long history of the mankind and the physical, social and cultural changes experienced from his origins and up till now. It is divided into two main sections: the evolution of life up to the appearance of Homo Sapiens and the physical and cultural adaptation of the hominids throughout five million years.

OLÈRDOLA

MUSEU D'ARQUEOLOGIA DE CATALUNYA- OLÈRDOLA

Castell d'Olèrdola
Tel. 938 90 14 20
olerdola@mac.es
www.mac.es

OLÈRDOLA IN THE OBJECTIVE

Until October 2001

A historical and retrospective view, through a photographic exhibition of the historic buildings of Olèrdola and the four nuclei that form the municipality: Moja, Sant Miquel d'Olèrdola, Sant Pere Molalta and Viladelpòs.

OLOT

MUSEU COMARCAL DE LA GARROTXA

C. de l'Hospici, 8
Tel. 972 27 91 30
museucomarcal@olot.org

**THE VIBRANT SOUL:
JOSEP CLARÀ AND THE PARIS YEARS (1900-1931)**

From 13 July to 26 August 2001

Exhibition which proposes a new focus on the works of one of the most celebrated Catalan sculptors, Josep Clarà i Ayats (Olot, 1878 – Barcelona, 1958), bringing together a selection of sketches for sculptures - among them clay, plaster, terracotta and models - and drawings through which the visitor can enter into the work, often painful, of a creator who struggles with contradictory tensions to turn ideas and intuitions into works of beautiful and serene expression. Josep Clarà was not a man of fixed convictions or narrow vision, but someone who lived the consolidation of his maturity in the atmosphere of the fin de siècle in Paris and the subsequent aesthetic debates, from which he received the influence of both the symbolism of Auguste Rodin and the classicism of Aristides Maillol. Looking at these sketches in their different phases enables us to discover a creative Clarà, less rigid and unequivocal, and to appreciate the potential sleeping under the incipient forms of his preparatory works, like states of latent energy, which later develop into the figures which, still today, we can find in monuments or public places.

SABADELL

MUSEU D'ART DE SABADELL

Dr. Puig, 16
Tel. 937 257 144
mas@ajsabadell.es

**FINA MIRALLES.
FROM IDEAS TO LIFE**

Until 8 July

This anthology of work by Fina Miralles is an exercise in the ordering and classification of her career, always setting up possible lines of interpretation and insisting on diversity and experimentation in the supports that she uses, but above all, in the absolute topicality of the themes

in her work: nature and man understood as one, but from different perspectives. Themes, ideas, which many later artists have projected in their works, as is reflected in the publication produced specially for this occasion with text by Commissioner Agustí Hurtado, by Rossend Lozano, Pilar Parcerisas and Assumpta Bassas. The exhibition would not have been possible without the important donation made by the artist, which brought together all her works.

FROM NUAGISM TO THE CRISIS OF INFORMAL ART IN SABADELL. 1957-1970

From 7 September 2001 to 3 February 2002

Informalism has not been much studied at Sabadell, and it is interesting that from 1960 we find here the development of gesture paintings by many of the members of the Gallot group, together with the work of Joan Vila-casas, which was developing by various abstract routes (Duque, Borrell, Vila-casas, Montserrat) and reconsideration of a return to figurative art (Angle, Morvay, Gogois, Bermúdez, Vila-Plana, Llorens and Balsach) from the middle of the 1960s. This exhibition seeks to fill an historic gap and will serve both to revive a moment of great importance in Catalan art, and to offer almost unknown works from private collections, which are evidence of the presence, modernity and category of the artistic proposals in the history of art and culture in our city.

SANT FELIU DE GUÍXOLS

MUSEU D'HISTÒRIA DE LA CIUTAT

Abadia, s/n (Monestir)
museuhistoria@guixols.net

EXHIBITIOIN COMMEMORATING THE CENTENARY OF THE BIRTH OF JOSEP AMAT

From 29 June to 2 September 2001

This is the star among the temporary exhibitions of the year: in commemoration of the centenary of the birth of the painter Josep Amat, the Museum is organising a long-term exhibition of this well-known artist, so closely linked to Sant Feliu de Guíxols.

AROUND SO LARGE A BIRTH-PLACE.

DRAWINGS BY CARLES PIQUERAS

From 7 to 30 September 2001

This shows works done with pencil on paper on a maritime theme by this local artist who exhibited regularly from 1981, both individually and in collective exhibitions. He has been selected for and has received mentions in various artistic and drawing events.

SANTA COLOMA DE GRAMENET

MUSEU TORRE BALDOVINA

Plaça de Pau Casals, s/n
Tel. 93 385 71 42
mtbsc@minorisa.es
<http://www.minorisa.es/mtbsc>

INVISIBLE MINERALS

Until 10 December 2001

Nature is complex, rigorous and surprising. We find out just how much in this exhibition, which shows us the crystals of certain minerals which, with their minute dimensions, cannot be seen by the naked eye. We discover the perfection of crystallisation of some minerals through microscope photography and direct observation through lenses which enable us to see and enjoy how spectacular they are.

CERAMIC SCHOOL

Until 19 July 2001

An exhibition presenting work by students of the Escola de Ceràmica, produced during this year in their different specialties, ceramics, tapestry, drawing and painting. Children's works: from 1 to 14 June. Adults' works: from 21 June to 21 July.

6 x 2 SHAPES IN CLAY

From 1 September to 10 October

This exhibition is an exchange of experiences between the Escola de Ceràmica of Santa Coloma and the Escola de Ceràmica Ixió in Mataró to reinforce knowledge of ceramic work outside the respective local ambits. The display shows the work of twelve students (six from each school), selected for their creativity and command of the technique applied to each work, aspects which have allowed some of them to extend their artistic career beyond the school itself.



SITGES

MUSEU CAU FERRAT

Fonollar, s/n
Tel. 938 94 03 64
m.sitges@diba.es

Miramar Building**GOYA ENGRAVINGS**

Until 16 September 2001

Travelling exhibition produced by the Museu de Mataró, showing the complete collection of engravings of the series Los Caprichos, Los Desastres de la Guerra, La Tauromaquia and Los Disparates or Proverbios, from the 1937 edition made from the original plates by Goya, at the Calcografía Nacional in Madrid.

TARRAGONA

MUSEU D'ART MODERN

Santa Anna, 8
Tel. 977 23 50 32
mamt@altanet.org
http://www.altanet.org/MAMT

FUNE.**INSTALLATION BY JULIA GALÁN**

From 5 July to 2 September 2001

Taking as a point of departure the story by Jorge Luis Borges, The garden with the forked paths, in which a man chooses, simultaneously, from all the options that life offers him, Julia Galán shows us the evolution of her being, and not a personality although it still is one, FUNE, voluble, changing and reinvented by the author herself, and taking us beyond reality. FUNE's body is an assembly of fragments, a hybrid in which there is something of the animal, the vegetable and the prothetic.

**ANTONI GUANSÉ. PAINTING**

From 18 September 2001

Antoni Guansé, artist born at Tortosa in 1926, who lived in Paris around 1953, gives us through this exhibition the opportunity to come close to his works and his personality with a vision born from his birthplace, the lands of the Ebro. From the hand of Gerard Vergés and Jaume Rocamora we delve into his origins so that we feel the force on which is based the artist all-round versatility.

**MUSEU NACIONAL ARQUEOLÒGIC DE TARRAGONA**

Pl. del Rei, 5
Tel. 977 23 62 09
mnat@mnat.es
http://www.mnat.es

TÀRRACO: LIVING ARCHAEOLOGY

Until 2 September 2001

With this exhibition, opened on International Museum Day, the MNAT presents a selection of archaeological pieces (sculptures, inscriptions, ceramics, stained glass, etc.) found in recent years in some of the many excavations made in different places and deposits of Tàrraco and its ancient lands, that is to say, in and around the city of Tarragona. In the exhibition are also included objects of interest which have been consolidated or restored after their delivery to the museum. All these materials give us significant evidence of the constant and intense scientific research going on in the different sectors of the old Roman capital (the splendid provincial and colonial buildings, the city and suburban dwellings and the rural population), a display of the liveliness of archaeology in Tarragona. At the same time, there is also a presentation of the updated version of the hypothetical perspective of Tàrraco in the second century AD, pre-



pared in the light of the new information provided by the research.

CENTRAL AMERICAN ARTS NICARAGUA, COSTA RICA I PANAMÀ

Del 22 de setembre de 2001 a gener de 2002

This travelling exhibition, organised by the Museu Barbier-Mueller d'Art Precolombí de Barcelona (Barcelona Barbier-Mueller Pre-Columbian Art Museum), will be presented in Tarragona after being shown in Barcelona and Paris. "Arts de l'Amèrica Central" seeks to give an awareness of the cultural heritage of various ancient peoples of Nicaragua, Costa Rica and Panama. Large stone sculptures, magnificent carvings in jade and green stone, walking-stick heads, ceramics with symbolic decoration and representations of the animal world, form part of the rich cultural legacy and the exhibition of pre-Columbian artistic treasures from lower Central America. The exhibition will include different teaching proposals and a cycle of lectures.

TÀRRAGA

MUSEU COMARCAL DE L'URGELL

Major, 11
Tel. 973 31 29 60
museutar@svt.es

THEATRE ILLUSTRATIONS, THE WORKING PROCESS, BY DAVID RUANO

From 7 to 23 September 2001

David Ruano (Girona, 1976) began work in drawing from 1990, and from 1995 to do the illustrations for the Collection of

Theatre Texts published by the Stage Foundation. He also worked in the theatre itself. In parallel, he is investigating the language of drawing as a tool of interpretation and expression. The exhibition is divided into two parts: one with the illustrations from the collection of the theatre texts referred to - a selection from the 150 drawings published up to date - with illustrations by Lluïsa Cunillé, Juan Mayorga, Ernesto Caballero, Raul Dans, Beth Escudé, Enzo Corman, Jean-Luc Lagarce, Alberto Miralles, among others, and sketches from other theatre collaborations. The second part goes deeply into his more personal work. Always using drawing as a tool for research and the regeneration of knowledge of the artist himself, where drawings are not seen as preparatory work but are autonomous works with their own syntax, of rigorous and analytical line, obsessive and direct, a slow process.

TERRASSA

CENTRE DE DOCUMENTACIÓ I MUSEU TÈXTEL DE TERRASSA

Salmeron, 25
Tel. 937 31 52 02 / 937 31 49 80
info@cdmt.es
http://www.cdmt.es

FACTORIES AND DREAMS

From 3 July 2001 to 31 May 2002

The introduction and expansion of modernism in Catalonia was possible due to the architects - true introducers of the new ideas - but also because the country was in a good economic moment, led by the textile industries, which were the promoters of the best architectural projects, whether factories, private houses, or apartment blocks. On the other hand, we know little of what these industries manufactured and of the activity of architects and decorators specifically in the textile field. This is the objective of the exhibition, which is organised in three parts "Dream creators", "Drawings and looms" and "The mirror and the image", through which we are shown interior decorating, the industrial surroundings and the world of fashion, with objects from private collections, private archives,



from the collections of the CDMT and also loans from various museums and Catalan entities, many of these objects unknown to the public. A catalogue completes the display.

MUSEU DE LA CIÈNCIA I DE LA TÈCNICA DE CATALUNYA

Rambla d'Ègara, 270
Tel. 937 36 89 66
dif.mNACTEC@logiccontrol.es
http://www.museu.mNACTEC.com

IT'S ALL CHEMISTRY

Until July 2001

The display seeks to show everyone the contribution of chemistry to the quality of life today, and how much of our daily life depends largely on chemistry. The visit begins showing the diversity and versatility of the behaviour of chemical elements. Then it goes deeply into the essence of chemistry itself and explains to us that elements and chemical compounds are the basis of the products obtained in industry. Finally there is an area devoted to the positive contribution of chemistry in different fields of life: health, leisure, communications, art, sport, the home, etc. The display is completed by a dramatised show for students.

5th mNACTEC PHOTOGRAPHIC COMPETITION

Until 30 September

Display of 53 photographs taken by students of the Photographic School, Polytechnic Foundation of Catalonia in Terrassa. Competition subject: the mNACTEC exhibitions.

MECANOFOLIE BY JEAN FONTAINE

Until 15 July

Exhibition of sculptures in ceramic, seeking to show the relationship between art and science and between man and the machine. Place: the Caixa Terrassa Cultural Centre.

MUSEU DE TERRASSA. CASTELL CARTOIXA DE VALLPARADÍS

Salmeron, s/n
Tel. 937 89 27 55
m.terrassa@diba.es
http://terrassa.org/terrassaalmon/museus/museus.htm

20C TERRASSA ART IN THE TERRASSA MUSEUM COLLECTIONS

Until February 2002

The collections of the Museu de Terrassa, although not exclusively of art, include an important collection of local art. Specifically, there are works by some 150 local artists of the 20C. The exhibition presents a selection of the most significant, from heirs of academicism, members of the Terrassa landscape school, modernism, noucentism, the avant-garde before the War, postwar art and recent trends. Around fifty artists form part of this representative show, while the catalogue includes a list of all the local artists and their works (registration numbers) acquired by Museu de Terrassa up to the year 2000.

TOSSA DE MAR

MUSEU MUNICIPAL DE TOSSA DE MAR

Pl. del Pintor Roig i Soler, 1
Tel. 972 34 07 09
bibtossa@ddgi.es
http://www.ddgi.es/tossa/Newweb98/Catala/museu.htm

JOSEP MOMPOU

From 14 July to 16 September 2001

The exhibition will be a broad selection of the works of Josep Mompou, drawn from private collections and various museums. During the summer months the Museum will be open to the public from Monday to Sunday from 10.00 a.m. to 8.00 p.m.



EL VENDRELL

MUSEU DEU

Pl. Nova, 6
Tel. 977 66 63 08
museudeu@elvendrell.net
http://www.elvendrell.altanet.org/ajtms/vendrell/museudeu.htm

THE HISTORY OF FIREARMS

Until 29 July 2001

Exhibition from the collections of weapons of the Museu Deu and from the collection of the Museu Arqueològic del Vendrell. The display takes us round different forms of weapon from the 17th century to the 19th century and the different features that typify them: firearms for personal protection, revolvers, military weapons from the wars of the past century and during the reign of Isabel II, and hunting weapons. There is a special area devoted to pieces grouped under the title "My grandfather went to Cuba", with an infantry machete and two Cuban machetes. The display, in addition to making known the artist heritage kept in the reserve stocks of the Museu Deu, has as its main objective to relate firearms with the daily life of our forebears.

DECORATED CERAMICS IN CATALONIA

From 24 August 2001 to 6 January 2002

In the exhibition we can admire gothic tiles; profusely decorated plates of a renaissance style, with birds, flowers and ships; jugs which were used for measuring wine or water; tureens of a clearly French influence, pitchers; polychromed plates from Banyoles; ewers used in aristocratic houses with handles in the form of lizards; containers for holy water which were kept at the head of the bed or at the entrance to the house. Special distinction is merited by pieces connected with the pharmaceutical world, specially pharmacy jars of great beauty with decorations of various types; geometrical, floral, angels, birds, etc., pharmacy dishes of various shapes with ceramic

lids. In addition to objects from the Centre de Promoció de la Cultura Popular i Tradicional Catalana (the Catalan Centre for Promotion of Popular and Traditional Culture) there are pharmacy pots and Catalan tile panels from the Museu Deu, works kept up till now in the museum reserve stocks.



VIC

MUSEU EPISCOPAL DE VIC

Sala Gòtica de l'Antic Hospital de la Santa Creu
Tel. 938 85 64 52
http://www.melq.uab.es/osona/museu/entrada.htm

MUSEU EPISCOPAL DE VIC. MASTER WORKS

Long term exhibition

So that works of the Catalan museum heritage kept by this Museum are not closed to the public while the Museum construction works are going on, this exhibition "Museu Episcopal de Vic. Obres Mestres" has been organised to show the most important objects in the setting of the gothic hall of the Santa Creu Hospital in Vic. Some two hundred principal works have been selected from the seventeen thousand objects in the museum, chosen to be representative of all the great collection.

VILANOVA I LA GELTRÚ

MUSEU DEL FERROCARRIL

Pl. d'Eduard Maristany, s/n
Tel. 938 15 84 91
fumvu01@ffe.es
http://www.ffe.es

PHOTOGRAPHS 1962-1968 LAWRENCE G. MARSHALL

Until 29 July 2001

Collected photographs of the locomotives which ran on the Ponferrada to Villablino railway. The display comprises photographs taken during the years 1962, 1967 and 1968 by Lawrence G. Marshall who, in addition to being a prestigious photographer and writer, is a railway enthusiast and works in the locomotive building compa-



ny Hudswell Clarke and Co. Ltd. His works exceed 21,000 negatives of locomotives from all over the world, of which approximately 3,000 are Spanish. The exhibition is the property of the Museo del Ferrocarril de Ponferrada.

BIBLIOTECA MUSEU VÍCTOR BALAGUER

Víctor Balaguer, s/n
Tel. 938 15 42 02
vbalaguer@vvirtual.es
http://www.eupvg.upc.es/eupvg/ajunta/balaguer.htm

VÍCTOR BALAGUER (1824-1901)

Until September 2001

Within the Víctor Balaguer Centenary celebrations, this display gives us the opportunity to come closer to Balaguer and re-discover him. Don Víctor's life was the life of a novel, a 19th century life explained by a course half-way between public face and private vision, by the panorama of the historical moment and the points of his works and legacy that are still topical. There are guided tours on Sundays.



ROMANTIC PAINTINGS IN CATALONIA

From 19 October 2001 to 13 January 2002

Romanticism in Catalonia meant the same as in other European countries, such as France, Italy or Germany, but for the public at large it passed almost unnoticed. For this reason it is important to review painting in our country during the Romantic period. To visualise the moment through pictures can help us to understand how Catalonia responded to a stimulus common throughout Europe, a stimulus decisive in the formation of sensitivity. There are guided tours on Sundays.

VILASSAR DE MAR

MUSEU DE LA MARINA DE VILASSAR

Eduard Ferrés, s/n
Tel. 93 750 21 21
museumar@teleline.es

MARITIME THEMES AND YACHTS

Until 22 July 2001

Exhibition of paintings of vessels and maritime themes by Núñez Segura. He is a painter of great prestige with work of detailed figuration and rigorous execution. His chromaticism, explosive, draws on the light and colour of our Mediterranean; the force in Núñez Segura's paintings is balanced and made serene by the strict discipline of his compositions. Núñez Segura has an extensive repertory and enjoys high prestige in the world of sea lovers.



ONE DAY WE HAD TO FLEE

From 29 July to 26 August 2001

Exhibition and workshops for boys and girls, in collaboration with Acnur. This exhibition collects works and drawings by child refugees from the Kakuma camp in Kenya. These small people share their experiences from their original home, their flight to exile and their current life as refugees. This is a traveling exhibition which seeks to

make an impact on the moral and political thinking of the viewer.

WORKS BY MARIA CARLES TOLRÀ

From 2 to 16 September 2001

A young artist who has already won prizes and has had individual exhibitions in Spain and some shared international shows. Maria Carles Tolrà has also trained as a specialised picture restorer, with experience in periods as far apart as informalist works and Catalan Romanesque murals, which have specially influenced her knowledge and the material treatment that she gives to each work.

OUR MUSEUMS AND THE SEA

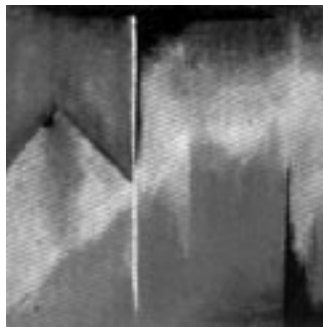
From 11 September

Exhibition of the presentation panels of museums and collections related with the sea and our country, and loaned pieces. Part of the events celebrating the fiftieth anniversary of the first exhibition of the nautical collections at the Museu de Vilassar de Mar (nautical section of the Museum).

CREATED FORCE. WORKS BY ANGELIKA HAPPEL-GEPRÄGTE KRAFT

From 23 September to 7 October 2001

Born in 1957 at Fulda in Germany, a student of Professor Jürgen Blum, she is a member of the Free Fine Arts Academy of Kleinassen. Her activity as an artist has developed both in her own country, Germany, and in other European countries. Her works combine geometry and a certain rationalism, and at the same time leave explicit the more material aspects of technique and pigments used, and also the play of three-dimensional representation in some of the forms.





ACTIVITIES

- Activities: 2 routes of stories with La Polsina: *Time was when...* The Museum tells us stories and La Polsina jumps a century. Stories from the last century, A treasure-hunt around the Museum building: *An adventure in history*. A game of hopscotch that takes us to different historical periods: *Let's play hopscotch*. **Museu d'Història de Catalunya**. Barcelona. Tel. 93 225 42 44
- Activities addressed to schoolchildren and adults about the nautical world (throughout the year). **Museu Marítim**. Barcelona.
- Activity: *Hospitalet in pictures*: audiovisual tour around the history of *Hospitalet and Industrialisation in pictures*: audiovisual tour around Hospitalet industry from the 18C up till now. Throughout the year. **Museu d'Història de l'Hospitalet**.
- Activities addressed to teachers and students around the collections. **Museu d'Art de Sabadell**.
- Seminar on Catalan Ret-fi. **Museu Marès** de la Punta. Arenys de Mar. Juliol. Tel. 937 95 81 57
- European Conferences on Patrimony. Concerts, guided tours, exhibitions, itineraries, workshops, etc., around the Catalan building heritage. On 29 and 30 September. Information: **ACM**, tel. 934 96 1616; **FMC**, tel. 933 10 44 40, **Oficina de Gestió de Monuments** de la Direcció General del Patrimoni Cultural del Departament de Cultura, tel. 933 16 27 40.

EXPOSICIONS ITINERANTS EN DISPONIBILITAT

- **Human towers, Images**. Exhibition in which 13 press photographers give their views of the human tower, with 57 large-scale photographs. Museu de Valls (Valls Museum). 45 m2. Contact: Jordi París. Tel. 977 60 66 54.
- **A thousand years of stitching design**. Textile pieces and graphic information in a display of the aesthetic, technical and economic development of stitched goods. Centre de Documentació i Museu Tèxtil de Terrassa. From 200 to 450 m2. Contact: Neus Grau. Tel. 937 31 52 02.
- **Egypt, between the sun and the half-moon**. Around eighty fabrics, from the time of the Pharaohs and up to Islamic times, illustrate this display. Centre de Documentació i Museu Tèxtil de Terrassa. From 200 m2. Contact: Neus Grau. Tel. 937 31 52 02.
- **Our rocks, an unusual view**. Teaching exhibition with large-scale photomicrographs of rocks, which introduce us into the world of Petrology in a simple and attractive way. Museu de Geologia de Barcelona. 90m2. Contact: Alícia Masriera. Tel. 933 10 11 38.
- **Invisible images**. Display of photographs of nature, from different minerals, rocks and fossils, from the collections of the museum. Museu de Geologia de Barcelona. Contact: Alícia Masriera. Tel. 933 10 11 38.
- **Jaume Muxart's Montserrat**. Selection of twenty works from the Montserrat series, with oils from 1997-1998. Museus de Martorell and Museu de Montserrat .38 m linear. Contact: Ferran Balanza. Tel. 937 75 32 54.
- **Illustration of Nature**. Artistic-scientific exhibition showing the representations that man has made throughout the ages of nature and animals. Museu de Zoologia de Barcelona. Tel. 933 19 69 12.
- **Railway History**. Exhibition of engravings, models and objects representing the history of the railway. Museu del Ferrocarril (Railway Museum). Adaptable. Contact: Rafael Julián. Tel. 91 506 83 35 . rjgarcia@ffe.es

BREUS

- Mrs. Trinidad Sánchez Pacheco, former director of the Museu de Ceràmica in Barcelona, where she developed a great work of dissemination on contemporary ceramics, especially that of Miró and Llorens Artigas, died on 19 March. Between 1986-1990 she directed the Spanish Academy of Fine Arts in Rome (at San Pietro in Montorio) from where she gave brilliant teaching on Spanish art. Her companions and friends mourn her loss.
- Mr. Antoni Deu Font, patron of the Museu Deu, at Vendrell, died last April.
- Ms. Mireia Rusich i Salvó has been appointed director of the Biblioteca Museu Víctor Balaguer, replacing Mr. Josep Trullén i Thomàs, who has joined the Museu Episcopal de Vic.
- The Museu d'Història de l'Hospitalet opens to the public from July *The secret museum with: the flow of immigration*.
- The Museu d'Història de Catalunya has finished the process of translation into three languages (Catalan, Castilian and English) of the texts of the posters, tickets and fields of the permanent exhibition, to make the contents of the museum intelligible to the large numbers of foreign visitors.



AGRAMUNT		
Fundació Privada Espai Guinovart Pl. del Mercat, s/n Tel. 937 39 09 04	THROUGH TIME ERNEST IBÀÑEZ NEACH	From 8 July to 28 August
	ÀNGEL JOVÉ	From 30 August to 9 October
BARCELONA		
Centre d'Art Santa Mònica Rbla. Santa Mònica, 7 Tel. 93 316 28 14	TRANS SEXUAL EXPRESS 2001: A CLASSIC FOR THE THIRD MILLENNIUM EXPERIENCES. FIRST EDITION OF THE TRIENNAL BARCELONA ART REPORT 2001	Until 30 September
	CARLES GUERRA. A LECTURE ON YOUTH . (TERRITORY CYCLE. CARTOGRAPHY OF A LOOK.	Until 30 August.
Centre de Cultura Contemporània de Barcelona (CCCB) C. de Montalegre, 5 Tel. 933 06 41 00	AFRICAS: THE ARTIST AND THE CITY BARCELONA ART REPORT 2001 CYCLE. EXPERIENCES	Until 11 September
	20C LIGHTHOUSES: DUCHAMP SEEN BY ADRIÁN ALEMÁN AND JUAN JOSÉ JIMÉNEZ	From 17 July to 24 September
	THE DREAM CITY OF FILM-MAKING BARCELONA ART REPORT 2001 CYCLE. EXPERIENCES	From 25 July to 24 November
Centre Cultural de la Fundació La Caixa Passeig de Sant Joan, 108 Tel. 934 76 86 00	RETURN TO THE COUNTRY OF THE WONDERS CONTEMPORARY ART AND CHILDHOOD	Until 8 July
	ED VAN DER ELSKEN	Until 8 July
Centre Cultural Caixa Catalunya. La Pedrera C. de Provença, 261-265 Tel. 934 84 59 95	LOVE AND DEATH ENGRAVINGS FROM THE NATIONAL LIBRARY COLLECTION	From 24 July to 7 October
Fundació Francisco Godia C. de València, 284, pral. Tel. 932 72 31 80	A LOOK AT THE TWENTIETH CENTURY FRANCISCO GÒDIA COLLECTION	Until September
Galeria Olímpica Pg. Olímpic. Estadi Olímpic Tel. 934 26 06 60	SIDNEY 2000, CITY AND THE OLYMPICS PHOTOGRAPHS BY AVELINO PÍ	Until 31 July
Museu de la Ciència de la Fundació La Caixa C. de Teodor Roviralta, 55 Tel. 932 12 60 50	AND THEN CAME FORM!	Until mid-2001
Museu Barbier-Mueller d'Art Precolombí C. de Montcada, 12-14 Tel. 933 10 45 16	NEW DISPLAY OF THE PERMANENT EXHIBITION	Until October
Museu Diocesà de Barcelona Av. de la Catedral, 4. Edifici Pia Almoïna- Tel. 933 15 22 13	PILAR PERDICES	Juliol i agost
Museu Egípc de Barcelona. Fundació Arqueològica Clos C. de València, 284 Tel. 934 88 01 88	LA MÒMIA DAURADA	Fins al 16 de setembre
Palau de la Virreïna La Rambla, 99. Tel. 933 01 77 75	MEXICO. JUAN RULFO. FOTÒGRAF.	Until 2 September
	YOU'REHERE BARCELONA ART REPORT 2001 CYCLE. EXPERIENCES	Until 2 September
	PHOTOMERCÈ 2000. JOAN GUERRERO	From 13 to 30 September
	IMPRESSIONS. YOKO ONO	From 21 September to 4 November



FOLGUEROLES

Casa Museu Verdaguer **VERDAGUER 150 YEARS** Until 30 April 2002
C. Major, 7- Tel. 938 12 21 57

MOLINS DE REI

Museu Municipal de Molins de Rei **RETALLS DE LA HISTÒRIA EN MINIATURA** Fins al 17 de juliol
C. Pintor Fortuny, 55

Tel. 936 80 33 40- **LA VOLTA AL MÓN EN 80 FOTOGRAFIES** Del 20 de juliol al 16 de setembre

CONCURS DE PINTURA RÀPIDA Del 18 al 25 de setembre

SENECA FALLS, UN SEGLE I MIG DE MOVIMENT INTERNACIONAL DE DONES Del 27 de setembre al 14 d'octubre

MOLLET DEL VALLÈS

Museu Abelló. **DALÍ. LETTERS AND PUPPETS** Until October 2001
Fundació Municipal d'Art DOCUMENTARY COLLECTION OF THE FUNDACIÓ MUNICIPAL JOAN ABELLÓ
C. Berenguer III, 122. Tel. 935 93 80 70

RODA DE TER

Museu Arqueològic de l'Esquerda **25 YEARS OF EXCAVATION IN THE IBERIAN AND MEDIEVAL** From September
Bach de Roda, 6. Tel. 938 54 02 71 **SITE OF ESQUERDA**

SANT BOI DE LLOBREGAT

Museu de Sant Boi de Llobregat **THE HUMAN PRIMATE** Until 21 July
C. de l'Hospital, 9 **ORÍGENS I EVOLUCIÓ DE LA NOSTRA ESPÈCIE**
Tel. 936 52 81 14

VIC

Museu de l'Art de la Pell. **THE SECRET ART OF MASKS** Until 8 July
Col·lecció A. Colomer Munmany CLAUS HOUGAARD
C. de l'Arquebisbe Alemany, 5

Tel. 938 83 32 79 **CONCEPTS. THE RAFAEL TOUS CONTEMPORARY ART COLLECTION** From 13 July to 2 September 2001

VILABERTRAN

Canònica de Santa Maria **WORKS ON PAPER** Long term exhibition.
de Vilabertran (DRAWINGS, PAINTINGS, ENGRAVINGS AND COLLAGES)
C. de l'Abadia, 4. Tel. 972 50 87 87

VILADRAU

Centre Cultural Europeu **I OPEN PATCHWORK CLASS** From 9 June to 8 July
de la Natura de Viladrau
C. Migdia.

Tel. 93 884 80 35 / 93 884 82 19 **RETURN, RETURN SERRALLONGA** From 10 July to 2 September

THE DIVINE LEFT From 4 September to 14 October

VILAFRANCA DEL PENEDEÈS

Museu de Vilafranca-Museu del Vi **PAINTINGS BY MARTA BALLVÉ** From 16 June to 29 July
Pl. Jaume I, 1

Tel. 93 890 05 82 **SCULPTURE IN WOOD BY JOSEP MASSANA** From 11 August to 30 September

VILASSAR DE MAR

Museu Enric Monjo **PAINTINGS BY PILAR VILLUENDAS** From 7 to 29 July
Camí Ral, 30

Tel. 937 59 36 39 **PAINTINGS BY MARIA HELGUERA** From 4 to 26 August

PAINTINGS BY VICTOR DOLZ From 1 to 30 September



PUBLICACIONS

- The Centre de Documentació i Museu Tèxtil has published *Las rutas de la seda. Cuaderno de viaje CDMT (The silk routes. Notebook of a CDMT journey)* by Carmen Masdeu and Luz Morata.

WORKSHOPS

- Teaching workshops: *The architectural heritage of our people. Cutouts*, and *Traditional games*, folder and teaching material. **Museu del Montsià** and the **Centre de Promoció de la Cultura Popular i Tradicional Catalana**.
- *Roman archaeology*. **Museu de Badalona**. Tel. 933 84 16 62.
- Workshops various, addressed to schoolchildren. **Museu de les Arts Decoratives**. Barcelona
- Workshops on various cultures for groups and adults. **Museu Etnològic**. Barcelona
- Workshops: **MNAC** organises various workshops over its museum heritage, addressed to teachers and individuals.
- Workshops around the historic heritage of the city. **Museu d'Història de la Ciutat** (City History Museum) Barcelona.
- Teaching workshops and visits to the installations for schoolchildren. **Museu d'Arqueologia de Catalunya**. Centre d'Arqueologia Subaquàtica. Tel. 972 20 66 31.
- Workshops: For schoolchildren, until 31 May: *The genetics that surround us* (Wednesday) and *Fossils: history and impressions of the past* (Friday), and workshops and visits for families on Sundays. Summer workshops for various ages (June). **Museu de Zoologia**. Barcelona.
- Workshops and visits always available over various themes of the museum. **Thermàlia**. Museu de Caldes de Montbui.
- Workshops: The craft of hand-made and recycled paper and Learning and practice in the preparation and use of prehistoric tools. **Museu Molí Paperer de Capellades**.
- Workshops and activities: Sundays at the Museum and Sessions of the Inflatable Planetarium. **Museu Municipal de Gavà**.
- Workshop teaching: linked to the exhibition *The Saint Roc Altarpiece at Hospitalet*, **Museu de l'Hospitalet**.
- *Experimenting with Art, The Baroque Altarpiece, Let's be Archaeologists*. **Museu Comarcal de Manresa**.
- A medieval city: Montblanc, La Conca Antiga, La Conca Medieval, Els oficis de la Conca. Addressed to the school public. **Museu Comarcal de la Conca de Barberà**. Montblanc.
- *Put Mount Olympus in order!* new workshop added to *Let's enjoy the Romans, Let's meet in Tàrraco*, and *Come to the Museum and be petrified!* and others, around the Roman world, addressed to the school-age public. **Museu Nacional Arqueològic de Tàrragona**.
- My first art workshop. For children, and archaeology Workshop. For primary school, secondary school and after. **Museu de Terrassa**.
- Workshops in summer: *Play with science, play with techniques*, for boys and girls from 5 to 12 years. **Museu de la Ciència i de la Tècnica de Catalunya**.

Edita: Departament de Cultura de la Generalitat de Catalunya.
Redacció: Servei de Museus.
 C/ Portaferrissa, 1 - 08002 Barcelona
 Tel. 933 16 27 40
Tiratge: 5.000 exemplars.
Coordinació de l'Informatiu:
 Carme Gassó.
A/e: cgasso@correu.gencat.es
Web: <http://www.cultura.gencat.es/museus/informatiu.htm>.
Disseny, maqueta i realització:
 Xavier Solé/disseny visual, sl.
Impressió: Printing. Súria.
Dipòsit legal: B. 20.475-1988.
ISSN: 0214-4-056